

# Brillanté

Doors and Components  
**HIGH GLOSS**  
HIGH GLOSS



**Richelieu**



The **Brillanté Collection** offers a program of custom doors and components with high gloss lacquer finish. This program will allow woodworking professionals to offer a high-end glossy product in a wide variety of colors and stylish patterns.

The doors of the **Brillanté Collection** are synonymous of quality and durability for all projects: kitchens, vanities, closet organizers and various furniture.

### KEY FEATURES:

- Coated with a high-gloss lacquer and dried using UV technology
- A 90% gloss level
- Excellent heat and scratches resistance
- UV rays and discoloration resistance
- Available with two-tone (**Acrylic 3D 2-Tone**) or identical color (**ABS Solid Color**) edgebanding
- Ideal for vertical applications
- Many colors and patterns available
- Easy addition of doors and components
- Easy maintenance

### OPTIONS:

- Choice of edgebanding
- Panels available in 16 and 18mm thicknesses
- Custom components program
- Choice of wood grain direction
- Available with matching grain (sequential method)

### RECOMMENDATION :

We recommend the installation of a third hinge (without spring) on doors of 36" (914mm) and more.

# Brillanté



## DOORS



Vertical Grain\*

Height	
Minimum	Maximum
4"	108"
102 mm	2743 mm
Width	
Minimum	Maximum
4"	48"
102 mm	1219 mm



Horizontal Grain\*

Height	
Minimum	Maximum
4"	48"
102 mm	1219 mm
Width	
Minimum	Maximum
4"	108"
102 mm	2743 mm

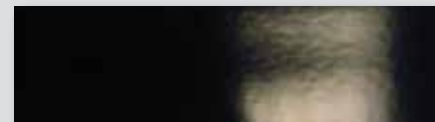
\* Doors measuring 50" (1270 mm) and more are not covered by warranty (warping or other).

## Options

### EDGE BANDINGS:

Will cover 4 edges of the door. You can choose any type of edgbanding to match with your doors.

For color availability, refer to the color guide of **Brillanté Collection** (see back of brochure).

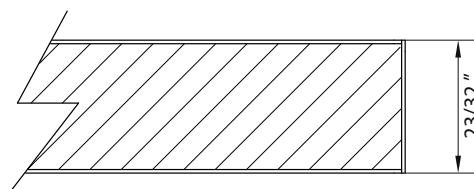


ABS Solid Color, 1 mm thick



Acrylic 3D 2-Tone, 1 mm thick

## Profiles



The door is made with a 18 mm thick MDF panel covered on both sides with a decorative paper and laminated. A high gloss finish is then applied to the outer side of the panel and a matte finish to the interior side. Edges are covered by the edgbanding of your choice.



1 450 687-9199 • 1 866 979-5999



1 450 687-8477 • 1 866 421-8477



The components are available in all colors for **Brillanté Collection**.

### COMPONENTS AND SPECIALTY PANELS

Components and special panels, manufactured in format of your choice, have one or more square edges (not machined), covered or not with a varied selection of edgebanding. They serve as end panel, door to a corner module (*Lazy Susan*), filler piece, etc.

When ordering, specify which edges need to be covered by edgebanding.

Note that **minimum** dimension for a component part without edgebanding is 1" (25mm) on the width or the length.



### TYPES OF SEQUENCING

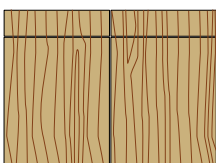
Our door can be manufactured either in a sequenced way or not. Our doors and drawer fronts have a standard vertical or horizontal wood grain for both types of sequencing methods.

(Please provide your plans when choosing sequential methods.)



#### Non-sequenced method

The production of doors is done randomly. That is, they will be fabricated at random and each one will display its own characteristics (graining, shades, etc.). This method is the **standard method** of production in the industry.



#### Sequenced method

The production of doors takes into account the exact position of each door relative to the next; each door becomes a visual extension of adjacent doors. This method results in a harmonious look for the entire work, and a surcharge for this method applies (maximum 4' x 9').

Please use our WEB program to order.

#### TYPES OF SEQUENCING

Row (side by side)



Column



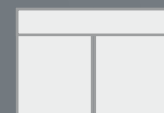
Column and row



T Row assembly



T Column assembly



# Brillanté

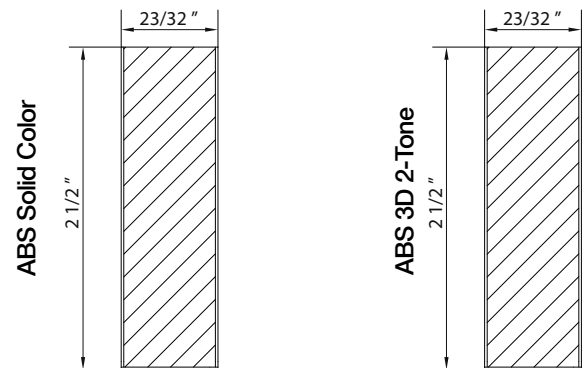
## Complementary products

### BRILLANTÉ PANELS

122 x 274 cm (48" x 108")

Thickness	16 mm (5/8")	18 mm (23/32")
	Weight: 2,72 lb/ft <sup>2</sup>	Weight: 2,88 lb/ft <sup>2</sup>
Magnolia	N746083054490	N746083057490
Black	N746103054490	N746103057490
Antracita	N746113054490	N746113057490
Naranja	N746123054490	N746123057490
Pistacho	N746133054490	N746133057490
Rojo	N746143054490	N746143057490
Guayana	N746173054490	N746173057490
Olivo	N746183054490	N746183057490
Blanco	N746193054490	N746193057490
Euroline 03	N746233054490	N746233057490

### MOLDINGS AND LIGHT SHIELDS



Visit [www.richelieu.com](http://www.richelieu.com) and use the "Brillanté Special Panels" Components Web Module under the *Cabinet Doors / Brillanté Doors* section to create moldings according to your needs.

Moldings smaller than 4" (101.6 mm) in height will only have edgingbanding on 3 sides.

### EDGE BANDING

Each color goes perfectly with an identical (ABS Solid Color) or two-tone (Acrylic 3D 2-Tone) edgingbanding.



ABS Solid Color,  
1 mm thick



Acrylic 3D 2-Tone,  
1 mm thick

	ABS Solid Color 23 x 1 mm x 183'	Acrylic 3D 2-Tone 23 x 1 mm x 190'
Magnolia	G608A0123183	C3D26080123190
Black	G610A0123183	C3D26100123190
Antracita	G611A0123183	C3D26110123190
Naranja	G612A0123183	C3D26120123190
Pistacho	G613A0123183	C3D26130123190
Rojo	G614A0123183	C3D26140123190
Guayana	G617A0123183	C3D26170123190
Olivo	G618A0123183	C3D26180123190
Blanco	G619A0123183	C3D26190123190
Euroline 03	G623A0123183	C3D26230123190



1 450 687-9199 • 1 866 979-5999



1 450 687-8477 • 1 866 421-8477

### REGULAR ORDERS:

The maximum production lead-time (date leaving the factory) for a regular order is ten business days. To compute the business days, start counting from the day following reception of the signed order at our factory. Whenever possible, we will produce the orders as soon as possible. If, for reasons beyond our control, production time should exceed ten business days, we will notify the customer immediately.

### SPECIAL ORDERS: **ADDITION\***

#### ADDITION (1 to 5 units)

- Order received before 10:30 AM: Leaves the factory the following business day†
- Order received after 10:30 AM: Leaves the factory on the second business day

#### ADDITION (6 units and more)

- Orders of more than 5 units that are marked "ADDITION" will be processed as normal orders with a maximum production time of ten business days.

### SPECIAL ORDERS: **REMAKE\*\***

#### REMAKE (1 to 5 units)

- Order received before 10:30 AM: Leaves the factory the following business day†
- Order received after 10:30 AM: Leaves the factory on the second business day

#### REMAKE (6 to 10 units)

- Order received before 10:30 AM: Leaves the factory on the second business day
- Order received after 10:30 AM: Leaves the factory on the third business day

#### REMAKE (11 units and more)

- Order received before 10:30 AM: Leaves the factory on the third business day
- Order received after 10:30 AM: Leaves the factory on the fourth business day

*Note: The time given is the reception time of the order by email at our factory and NOT at Richelieu.*

*\*ADDITION: Error or omission on the part of the cabinet maker on an order already produced and delivered during the previous 30 days.*

*\*\*REMAKE: Error or omission on the part of the manufacturer; remakes involve no cost for the cabinet maker.*

*† This delay could be of 2 business days during winter time.*

### EXPRESS ORDERS:

We offer an Express service for your door orders from 1 to 5 business days depending on your needs (the business days start from the day after the order is confirmed).

The prices are as follows:

- 1 business day = surcharge of 60%
- 2 business days = surcharge of 40%
- 3 business days = surcharge of 25%
- 4 business days = surcharge of 20%
- 5 business days = surcharge of 15%

# Brillanté Warranty



All doors from the **Brillanté Collection** are covered by a **5-year** limited warranty against all manufacturing defects.

#### **INCLUDED:**

(Covered by the warranty)

- Wrong size (tolerance  $\pm 1/32"$  or  $\pm 0.8\text{mm}$ )
- Out of square (tolerance  $\pm 1/32"$  or  $\pm 0.8\text{mm}$  out of square)
- Warping greater than tolerance (see General Rules)
- Loosening of paper from MDF substrate
- Delamination of MDF substrate

For such inclusions to be covered, the door must not have suffered any shocks, exposure to a heat source, contact with water or any other liquid substances. Moreover, it must have been installed according to recognized industry practices.

#### **GENERAL RULES:**

- All claims must be lodged before the expiration of the warranty period, i.e., **5 years** from the delivery date of the doors. Replacement or repair of a door may in no case extend the original 5-year warranty.
- Both invoice and defective door must be returned to the manufacturer for expert examination.
- The doors to be replaced will be invoiced at 100% and a credit will be produced following examination of the defective doors.
- If, at the time the warranty is being used, the color and/or model of the doors in question are no longer available for reasons beyond our control, we reserve the right to replace (or credit) the defective door(s) with another equivalent color or model without compensation for the balance of the doors of the same order.
- Transportation costs for the delivery of the replacement doors are subject to the same coverage percentages as the doors being replaced.
- The warranty is limited to the replacement or repair of the defective door without any compensation for labour and/or loss of use of the product.
- The warping warranty only applies to doors 32" or less with a 1/8" tolerance (measured at center, with the door flat on a very straight surface, e.g., panel saw).
- Warping problems must be detected and reported within 10 days following reception of the order, and the defective door(s) must not have been altered in any way (drilled for hinges, handles installed, etc).
- Door claims that involve breakage at the reception of the order with no damaged box must be made within five days following reception of the order, and the defective door(s) must not have been altered in any way (drilled for hinges, handles installed, etc). The door(s) in question must be returned to the manufacturer.
- Doors measuring 50" and more are not covered by any warranty.
- The warranty coverage is prorated as follows:
  - 100% for the first two years
  - 75% for the third year
  - 50% for the fourth year
  - 25% for the fifth year

#### **NOT INCLUDED:**

(Not covered by the warranty)

- Panel and edgebanding breaks following shock, negligence, misuse, exposure to an excessive heat source or contact with water or other liquid substance (swelling of material)
- All defects that result from misuse and/or use not in accordance with recognized industry practices
- Deterioration of a door that was exposed to abnormal temperature and/or humidity conditions
- Burns on one of the materials
- Stains on one of the door components
- Degradation of the product due to material aging or normal wear and tear

#### **DOORS DAMAGED DURING TRANSPORTATION:**

When you receive the boxes, always make sure they have not been damaged during transportation before signing the delivery document. If any of the boxes have been damaged, write "Damaged Box" or "Damaged Boxes" on the waybill. You must keep the box(es) in question as well as the doors to be replaced for our claim to the transportation company. Notify us immediately about the problem so that repaired doors or replacement doors may be shipped to you as soon as possible.

#### **MISSING BOXES:**

When you receive the boxes, please make sure the number of boxes delivered matches the number shown on the delivery document. If some boxes are missing, write "Missing Boxes" on the document before signing it, indicating the number of missing boxes. Notify us immediately about the problem so that a search can be made to locate the missing package(s).



1 450 687-9199 • 1 866 979-5999

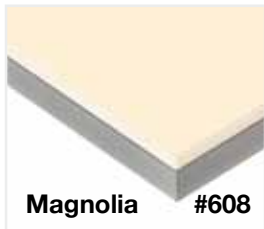


1 450 687-8477 • 1 866 421-8477

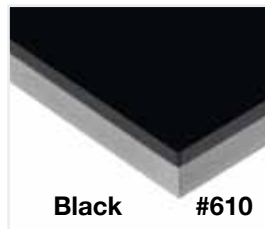
# Brillanté

High gloss quality product in a wide range of stylish colors and patterns

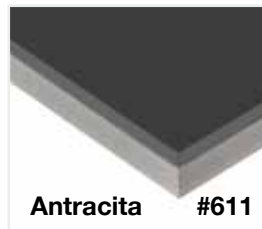
Printed colors may differ actual colors. Visit our website for specifications, production lead-times and warranties. The drawings are not to scale.



Magnolia #608



Black #610



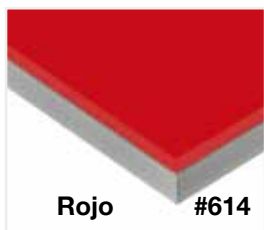
Antracita #611



Naranja #612



Pistacho #613



Rojo #614



Guayana #617



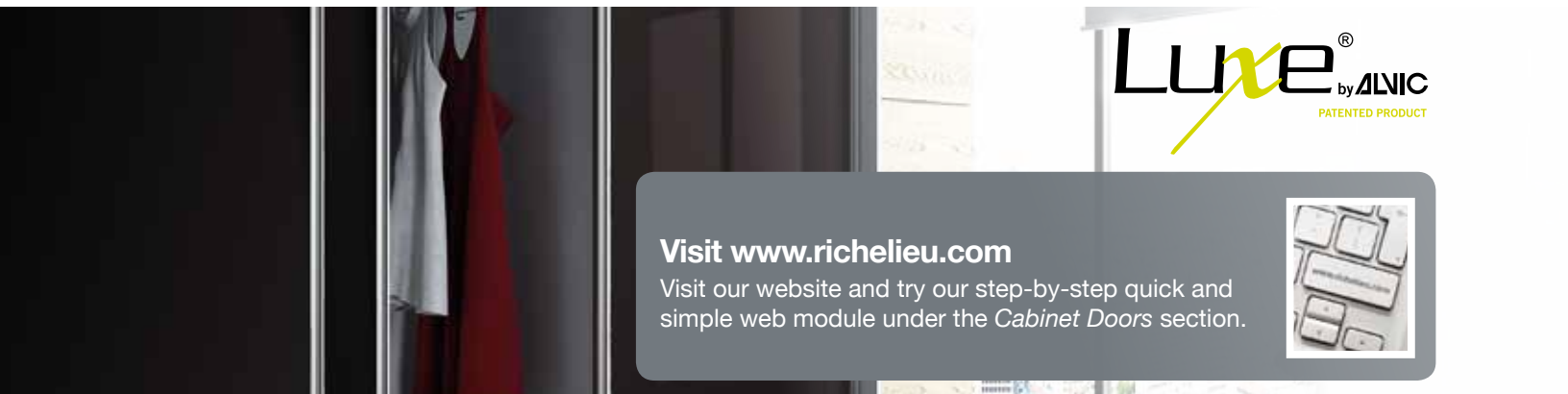
Olivo #618



Blanco #619



Euroline 03 #623



**Luxe**<sup>®</sup> by ALNIC  
PATENTED PRODUCT

Visit [www.richelieu.com](http://www.richelieu.com)

Visit our website and try our step-by-step quick and simple web module under the *Cabinet Doors* section.



## CANADA

Tel.: 1 450 687-9199 • 1 866 979-5999

Fax: 1 450 687-8477 • 1 866 421-8477

### ALBERTA

Calgary  
Edmonton

### NEWFOUNDLAND

St. John's

### QUÉBEC

Laval  
Montréal  
Québec

### BRITISH COLUMBIA

Kelowna  
Vancouver  
Victoria

### NOVA SCOTIA

Halifax

### SASKATCHEWAN

Regina  
Saskatoon

### MANITOBA

Winnipeg

### ONTARIO

Barrie  
Kitchener  
Mississauga  
Ottawa  
Sudbury  
Thunder Bay  
Toronto

### NEW BRUNSWICK

Moncton



**Richelieu**  
[www.richelieu.com](http://www.richelieu.com)

